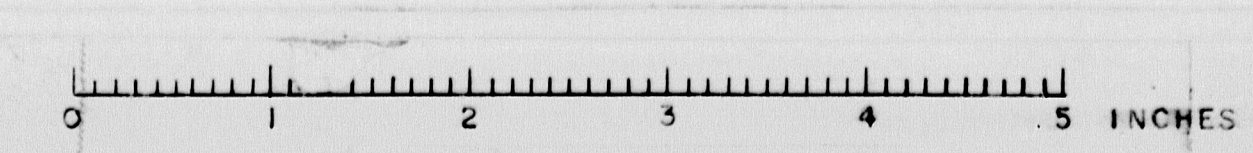


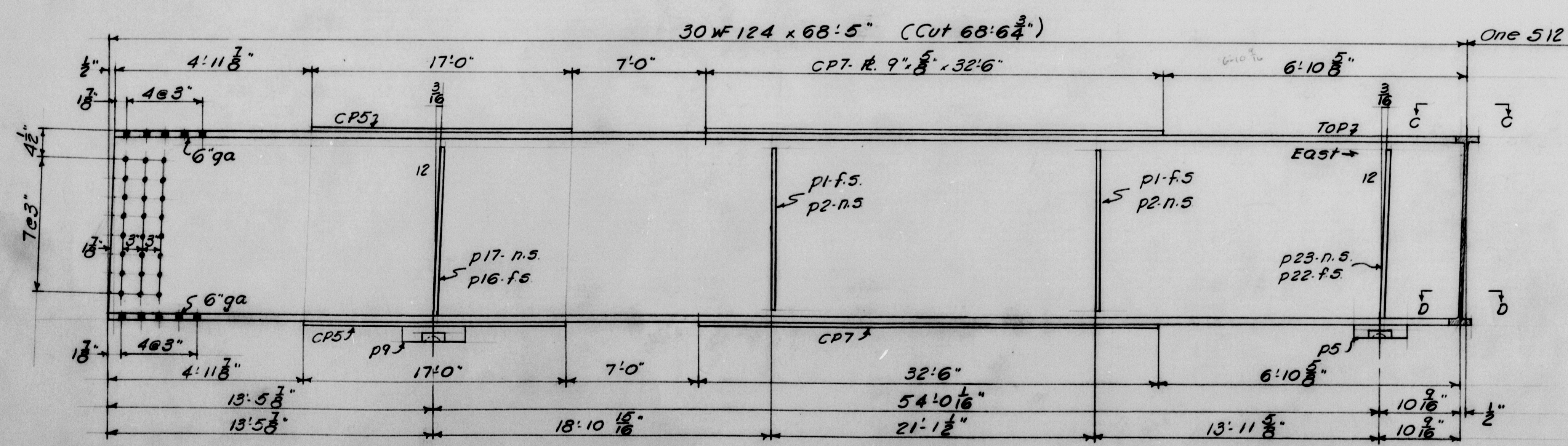
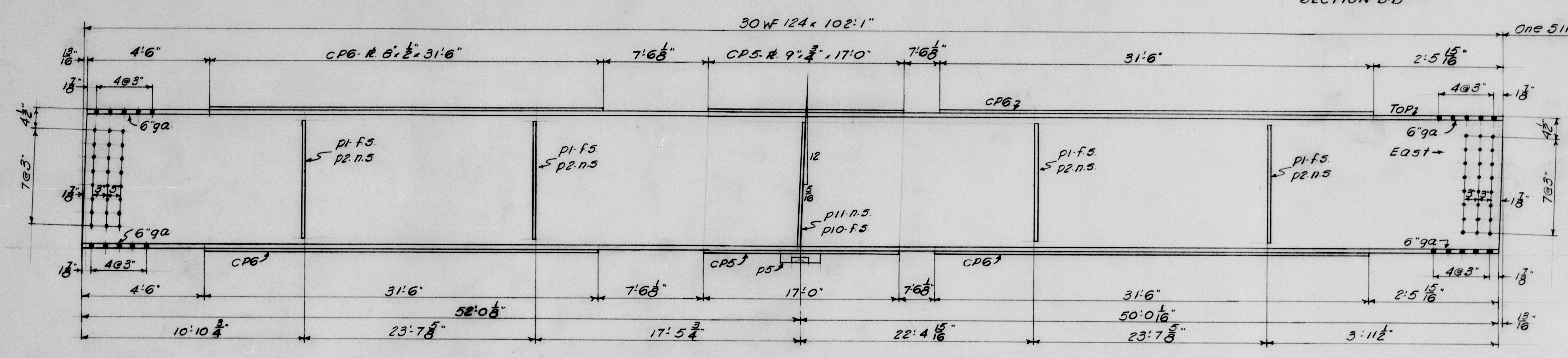
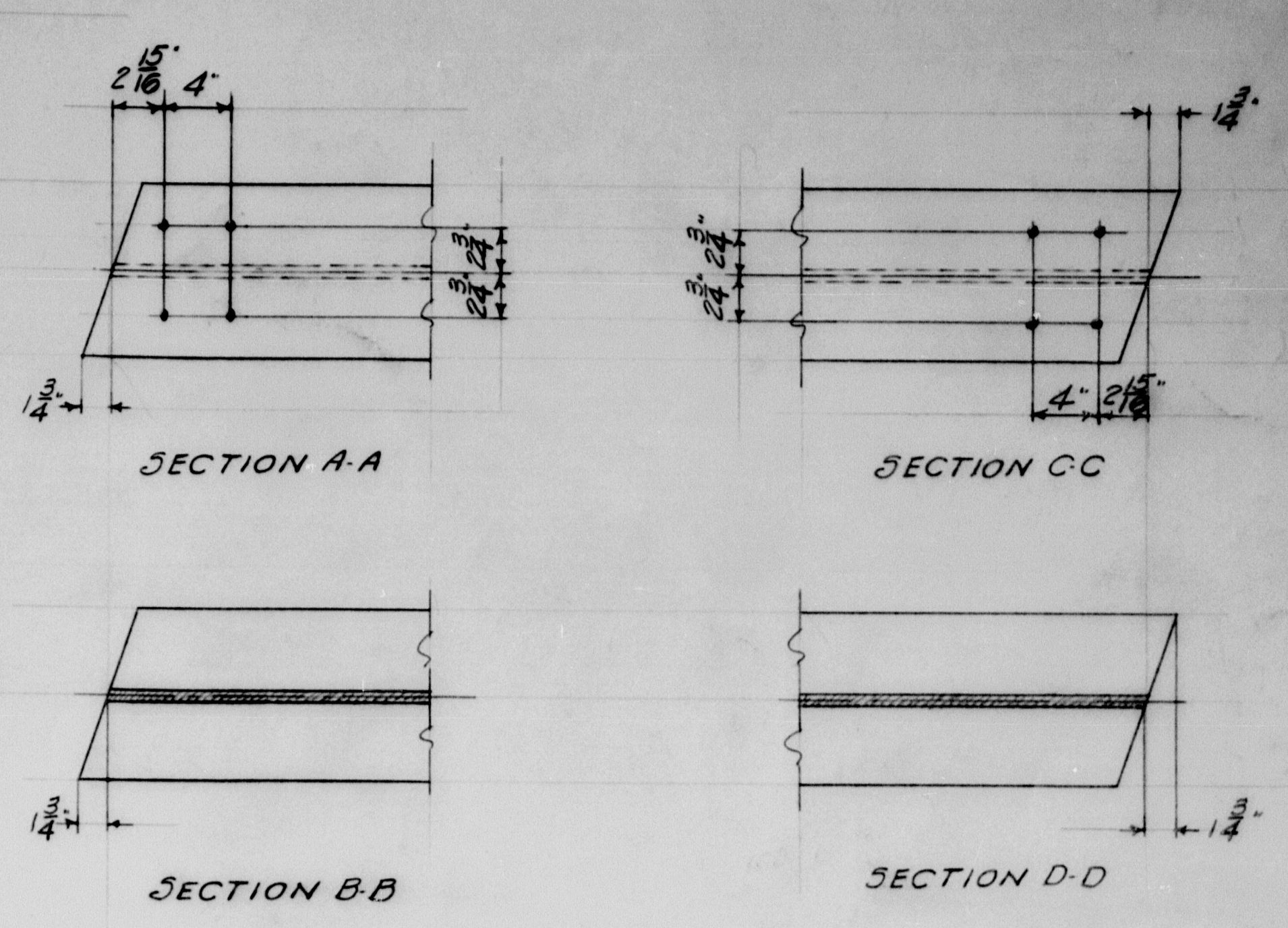
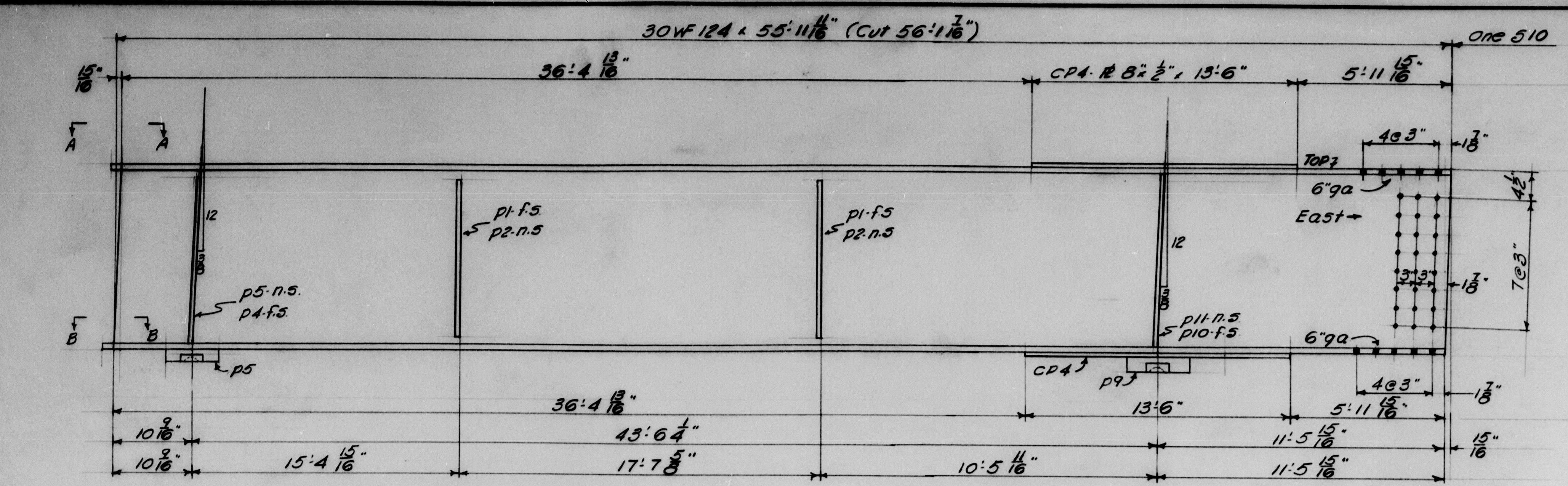
NOTES:  
 Shop Conns. Welded  
 Field Conns. 3/4" 41 Strength Bolts  
 Holes 1 1/8"  
 Paint: Red Lead  
 See Drwgs 8-411-53 & 54 for assembly  
 & typical details & sections.  
 See Drwgs 8-411-51 & 52 for p5 & p9

STRINGER DETAILS	
Bancroft & Martin Rolling Mills Company Leath, Portland 7, Maine	
DEPOT ROAD OVER INTERSTATE FALMOUTH, ME.	
CUSTOMER	E.C. SNODGRASS
DESIGNER	M.S.H.C.
ORDER NO.	DWG. NO. 8-411-510

DRAWN	12-17-58	PLF
REVISION		
REVISION		
REVISION		







NOTES:  
 Shop Conns.: Welded  
 Field Conns.: 3/4" 41 Strength Bolts  
 Holes: 1 1/8" Ø  
 Paint: Red Lead  
 See Drwgs. 8-411-53 & 54 for assembly  
 & typical details & sections.  
 See Drwgs. 8-411-51 & 52 for p5 & p9

STRINGER DETAILS

*Bancroft & Martin Rolling Mills Company*  
 South Portland 7, Maine

DEPOT ROAD OVER INTERSTATE  
 FALMOUTH, ME.

CUSTOMER EC 5NODGRASS  
 DESIGNER M.S.H.C.

ORDER NO. \_\_\_\_\_ DWG. NO. 8-411-510

DRAWN	12/17/58	PLF
REVISION		
REVISION		
REVISION		

